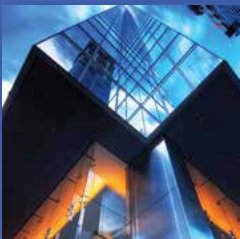




Southbourne Group

At Southbourne Group, our reliable, joint-method has centered on assisting our customers enhance and safeguard their asset through almost thirty years of market cycles.





Welcome to a different kind of Investment Company.

At Southbourne Group, we pursue a time-proven investment philosophy and focus on people's needs. This is how we have survived some of the most turbulent markets in investment history.



Welcome to a better Investment Approach.

At Southbourne Group, our reliable, joint-method has centered on assisting our customers enhance and safeguard their asset through almost thirty years of market cycles.

At the core of our investment achievement is a dedicated rudimentary research that uncovers businesses with inadequate downside risk and compelling upside prospects. By investing in undervalued companies, our objective is to maintain capital during unstable times and to offer excellent risk-sensitive revenues in the long haul.



Anatomy of a Portfolio Team

Compared to majority of companies, we do not differentiate between investment research and portfolio management. Each Southbourne Group analyst belongs to a Research Team that concentrates on discovering opportunities in particular industries, and a Portfolio Group that manages certain approaches.

This interconnected, synergistic framework has a better chance of pinpointing potentials through a vibrant inter-breeding of innovative concepts. It also assures that financial methods are always propelled by direct and meticulous study and our time-tested culture based on worthwhile principles.

Portfolio Team

Southbourne Group portfolio groups apply the highest form of due diligence in availing of opportunities recognized by the research teams.

Research Groups

Analyst recommendations are assessed and scrutinized by a team of professionals.

Analysts

We employ industry veterans who select top-rated firms with undervalued revenues prospects for growth and minimum disadvantages.



Our Business

Welcome to a higher level of Trust.

We strive hard to minimize risk and retain transparency in our customers' portfolios, as well as in our enterprise. We sustain a healthy balance sheet with no liability and a minimum one-year's value of working capital in hard currency always. We do not make use of leverage, take deposits, or make loans.

Our Role in the Community

Welcome to a Cultrate that Cares.

Southbourne Group has a vast experience of serving the cause of a more resilient community and self-reliant future. Through our ideas and accomplishments, we play a vital role in creating a greener, more vibrant economy.



Our Company Culture

For each incoming year, we all anticipate productive moments and demanding times – both as individuals and as a group.



Institutional Investing

Welcome to goal-oriented Institutional Investing.

At Southbourne Group, we assist institutional investors expand their portfolios, manage risk, and achieve excellent long-lasting performance.

Corporate pension and public retirement programs, foundations, endowments, mutual funds, and high-net value individuals trust Southbourne Group for entry to an assortment of investment instruments to aid them attain their objectives.

- Our Single Investment Institutional approaches are intended to assist bigger institutional investors identify certain asset types and market areas that match their general portfolio.
- Our Comprehensive Asset Allocation Strategy is created to aid smaller firms and high-net value individuals invest in a more favorable mixture of Southbourne Group methods.

As a Southbourne Group customer, your service group includes primary and secondary Client Relationship Managers, a Client Advocate, and an Operations Specialist – all committed to continually keep you informed and served well.

Please get in touch with us to find out which Southbourne Group Investment Strategy perfectly suits your needs.



Single Investments

Southbourne Group Personal Strategies are diversified portfolios that assist institutional customers leverage our sensible, value-based investment approach to aim for particular asset types and market areas.



Southbourne Group Large Cap Value

The Southbourne Group Large Cap Value Strategy invests in about 40 to 60 firms with appealing evaluations. The portfolio group searches for high-quality firms with potentials for future productivity that are considerably stronger than what is presented in the present stock value. Firms with enough free cash-flow and low-debt are selected.

Southbourne Group Income Opportunity

The Southbourne Group Income Opportunity Fund is a dynamically administered portfolio that aims to produce active revenue with asset increase and tax competence by concentrating on firms with cash-flow that is stable enough to maintain a continuous or growing dividend. The fund selects dividend-issuing common stocks, preferred stocks, convertibles securities, royalty trusts, energy MLPs, REITs, and certain debt instruments.



Southbourne Group Dividend Growth

The Southbourne Group Dividend Growth portfolio focuses on long-lasting capital growth through bottom-up security options while concentrating on firms with a consistent and rising dividend output. A minimum of 80% of the portfolio is put into securities that provide a dividend presently. The procedure favors firms with high cash-flow turnover on capital and appealing valuations. The strategy invests in about 40 to 60 firms with market capitalizations higher than \$1 billion.

Southbourne Group Global Equity

The Global Equity Strategy provides investments in the common stock of 65 to 85 firms based worldwide, with market capitalizations over USD \$1 billion.

We believe that investments in viable enterprises that are valued incorrectly and that can produce high and consistent revenues growth will allow excellent economic returns on a long-term basis.

Southbourne Group Emerging Markets

The Emerging Markets Strategy invests in the common stock of 70 to 90 firms that are situated, or conduct major operations in expanding markets and have market capitalizations of more than USD \$500 million. We believe that investments in viable enterprises that are not correctly valued and can produce positive and consistent revenues growth will allow excellent economic returns on a long-term basis.



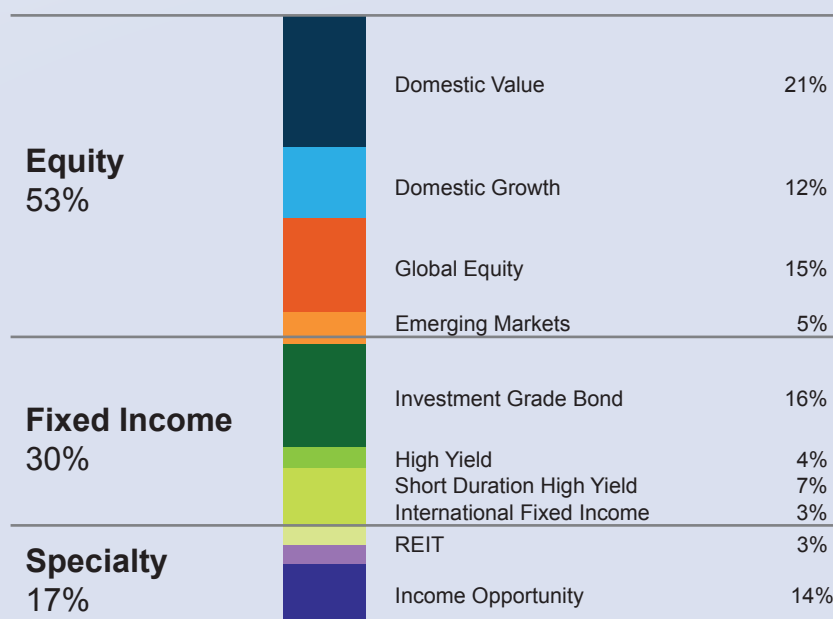
Welcome to client-focused Private Wealth Management.

At Southbourne Group, we assist families and individuals safeguard their richly-deserved assets while striving to attain their financial objectives that keep them challenged.

As a Southbourne Group customer, you will connect with a Relationship Manager who will personally come to know you and your objectives. Your Relationship Manager heads a group of experts that supervise each item of your wealth management approach – from implementing your tailor-fitted portfolio and furnishing you with meticulous reporting, to satisfying your queries and addressing your daily requirements.

Enhanced Balance Allocation

An extensive allotment approach from Southbourne Group is founded on our Enhanced Balanced Allocation – an asset approach strategy created utilizing remarkable return/risk and correlation data, merged with our proprietary capital market projections. This proprietary allocation approach is intended to increase potential revenue while reducing risk, and offers the structure for our customers' portfolios.



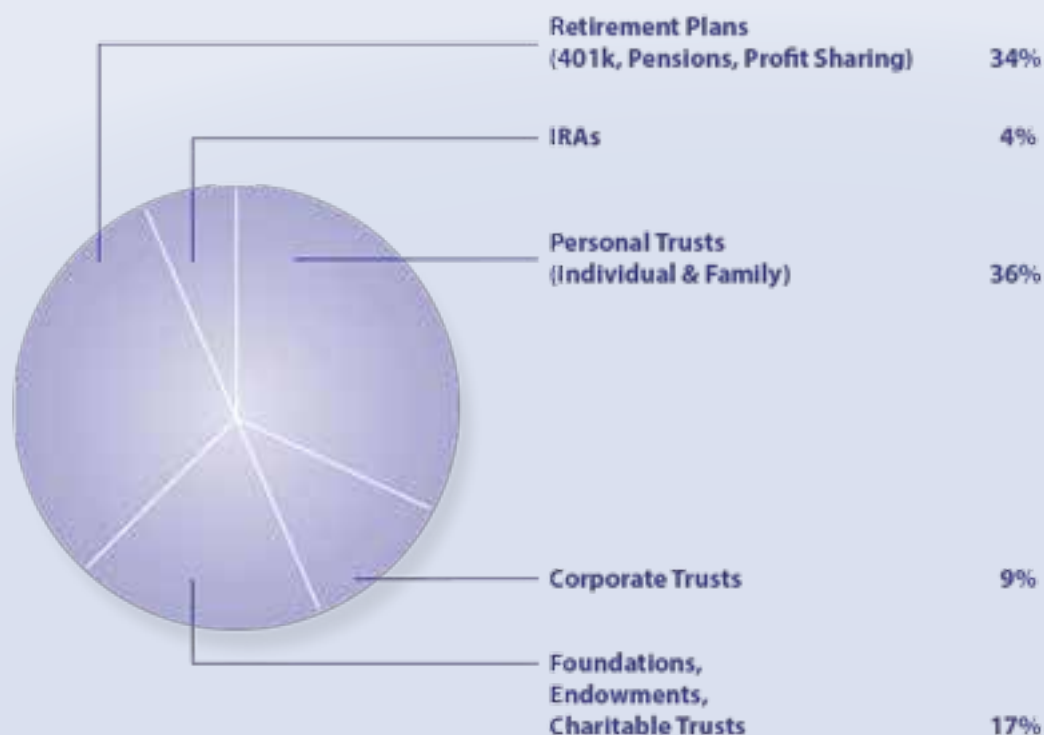


Private Wealth Management

At Southbourne Group, we assist families and individuals safeguard their richly-deserved assets while striving to attain their financial objectives that are important to them.

As a Southbourne Group customer, you will connect with a Relationship Manager who will personally come to know you and your objectives. Your Relationship Manager heads a group of experts that supervise each item of your wealth management approach – from implementing your tailor-fitted portfolio and furnishing you with meticulous reporting, to satisfying your queries and addressing your daily requirements.

At the core of our portfolio development strategy is the Enhanced Balanced Portfolio. Click [here](#) to know more about this time-proven investment structure, or browse the portfolio's incorporated funds shown as follows:



As of 8/24/11. Percentages based on AUM of Private Wealth Management client relationships.



Corporate Profiles

Southbourne Group offers investment management assistance to institutional investors, private capital customers and investment intermediaries. Southbourne Group administers an assortment of investment methods, Global and Emerging Markets equities as well as income-based portfolios. Use to these methods is accessible through segregated accounts, co-mingled funds and mutual funds.

Careers

If you are interested in applying for a position in our group of professionals, please fax your application letter and resume, or send an application e-mail.

In your application letter, kindly identify your special skills and the field of the company where you feel you would be of the greatest value. Please include your salary needs and professional references. All resumes submitted will be held confidentially.

Southbourne Group provides equitable opportunities to all its employees and does not discriminate against any individual employee on the basis of race, creed, color, belief or religion, ancestry, sex, ethnic origin, age or physical disability.

Candidates must provide documented track record in business development with plan sponsors. The personnel will work with existing consultant-relations and client-relationship management groups in providing the progress goals of the firm's institutional business.

